



### LOAD INFORMATION:

Describe the material you are planning to lift: \_\_\_\_\_

#### Tong Type Needed:

Friction (Designed to lift tubes, rolls, round bars, pipe, & other cylindrical materials)

##### Friction Tong Load Dimensions:

Min (inches) O.D. \_\_\_\_\_ I.D. \_\_\_\_\_ Length \_\_\_\_\_ Weight \_\_\_\_\_

Max (inches) O.D. \_\_\_\_\_ I.D. \_\_\_\_\_ Length \_\_\_\_\_ Weight \_\_\_\_\_

Desired Tong Lift Point:  O.D.  I.D.  Ends

Supporting (Designed to lift crates, boxes, containers, & other square/rectangular shaped materials)

Indentation (Designed to lift ingots, boxes, bales, and other straight sided materials)

##### Supporting/Indentation Tong Load Dimensions:

Min (inches) Width \_\_\_\_\_ Length \_\_\_\_\_ Height \_\_\_\_\_ Weight \_\_\_\_\_

Max (inches) Width \_\_\_\_\_ Length \_\_\_\_\_ Height \_\_\_\_\_ Weight \_\_\_\_\_

Desired Tong Lift Point:  Width Side  Length Side

Product Positioning Prior Lift:  Flat Surface  Rack  Other (specify): \_\_\_\_\_

Product Positioning Post Lift:  Flat Surface  Rack  Other (specify): \_\_\_\_\_

Does Lifter Require Protective Lining To Prevent Damage To The Load:  Yes  No

Is A Latch Required (Used to assist with hands-free operation):  Yes  No

Is An Auto-Latch Required (Used to assist with hands-free operation):  Yes  No

Is The Load Hot:  Yes  No

If Yes: Max Temp: \_\_\_\_\_ Required Lifter/Load Contact Time : \_\_\_\_\_ Min Time Between Lifts \_\_\_\_\_

### CRANE SPECIFICATIONS:

Distance Between Top Of The Load To The Crane Hook High Position: \_\_\_\_\_

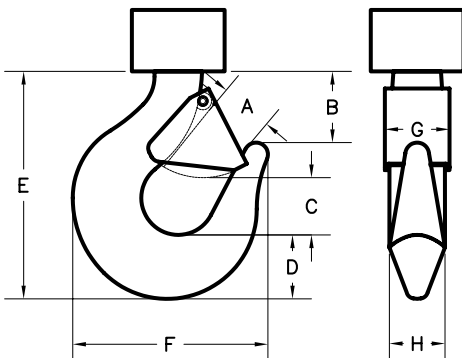
Capacity Of The Crane: \_\_\_\_\_

Required Duty Cycle Of The Roll Lifter: Lifts Per Hour \_\_\_\_\_ Lifts Per Day \_\_\_\_\_

Crane Classification(s):  A  B  C  D  E  F

### CRANE HOOK SPECIFICATIONS (Inches) :

A: \_\_\_\_\_ B: \_\_\_\_\_ C: \_\_\_\_\_ D: \_\_\_\_\_ E: \_\_\_\_\_ F: \_\_\_\_\_ G: \_\_\_\_\_ H: \_\_\_\_\_



Please provide pertinent application information not supplied above (extreme product or operating temperature, extreme environmental conditions such as temperature or moisture, space or headroom restrictions, additional specifications):

\_\_\_\_\_

\_\_\_\_\_

\_\_\_\_\_

\_\_\_\_\_